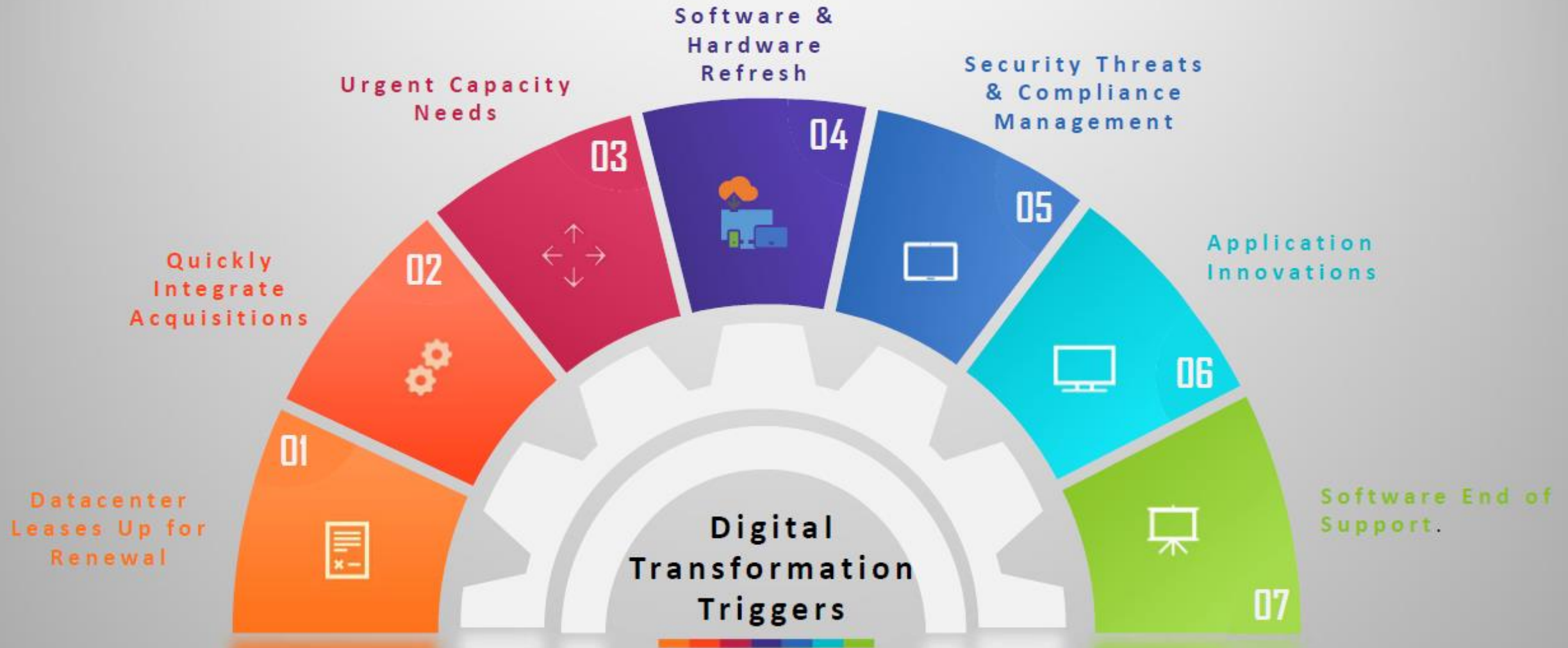


# Cloud Migration

Andrey Andreev,  
Azure BDM, Softline

# Digital Transformation – Key Drivers

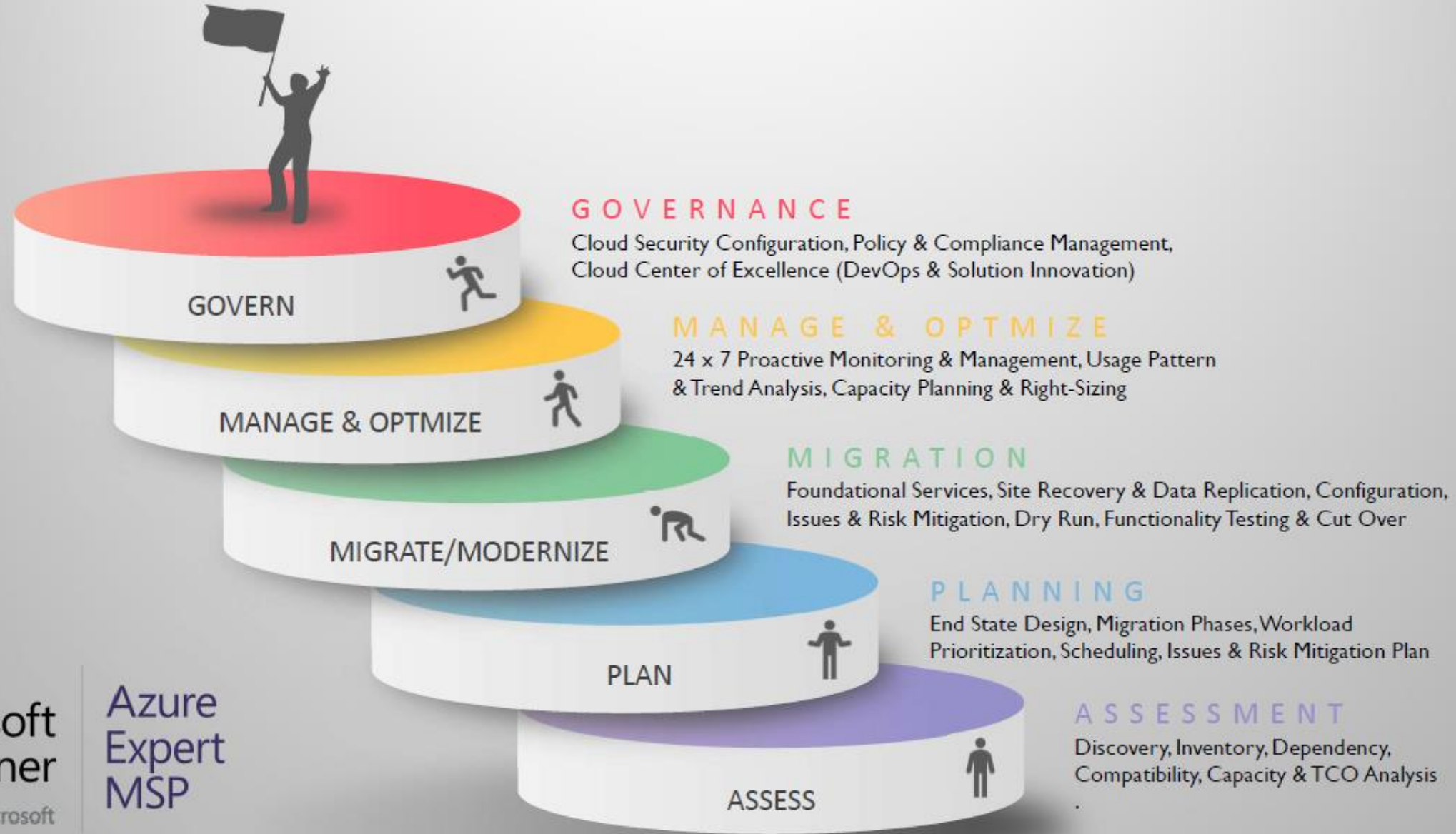


# Cloud Adoption Framework



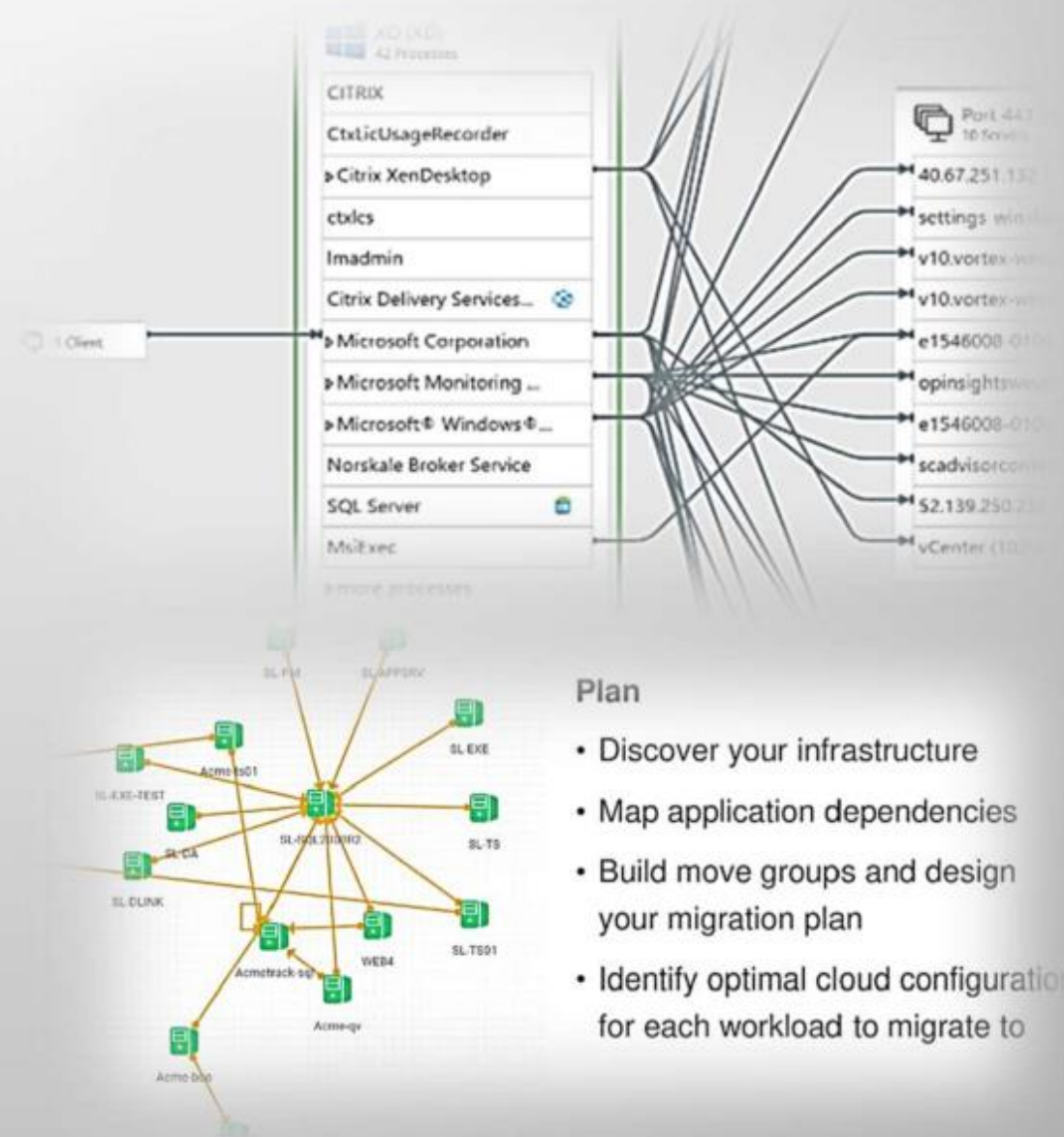


# Softline Digital Transformation Journey



# Cloud Assessment

- Tool Base Infrastructure and Application Discovery
- Infrastructure and Application Dependency Analysis
- Azure Compatibility Analysis for Migration Approach
- Capacity Utilization for Cloud Infrastructure Sizing and Capacity Planning
- On-premise Network Topology Review, Usage Analysis including Business Connectivity Requirement Gathering
- Cloud Economics - TCO & ROI Analysis along with Azure Infrastructure, Migration and Operating Cost Estimates
- Overall Cloud Strategy And Digital Transformation Roadmap



# Cloud Readiness Check.



## Processes

Establishing cloud readiness, migration and modernization strategies (PolycLOUD, Cloud centre of excellence, cloud-first strategy)



## Security

Recording and reducing risks, boosting protection, minimizing downtime and the impact of attacks, improving response capability



## Cost

Optimizing costs (right-sizing), identifying suitable services for now and later (from "as much as necessary" to "could we manage with less")



## Architecture

Selection of suitable services, architecture patterns to achieve quality targets



## Development

Improving speed, effort and quality, applying DevOps, infrastructure as code (IaC), platform as a service (PaaS), container as a service (CaaS) and function as a service (FaaS)



## Operation

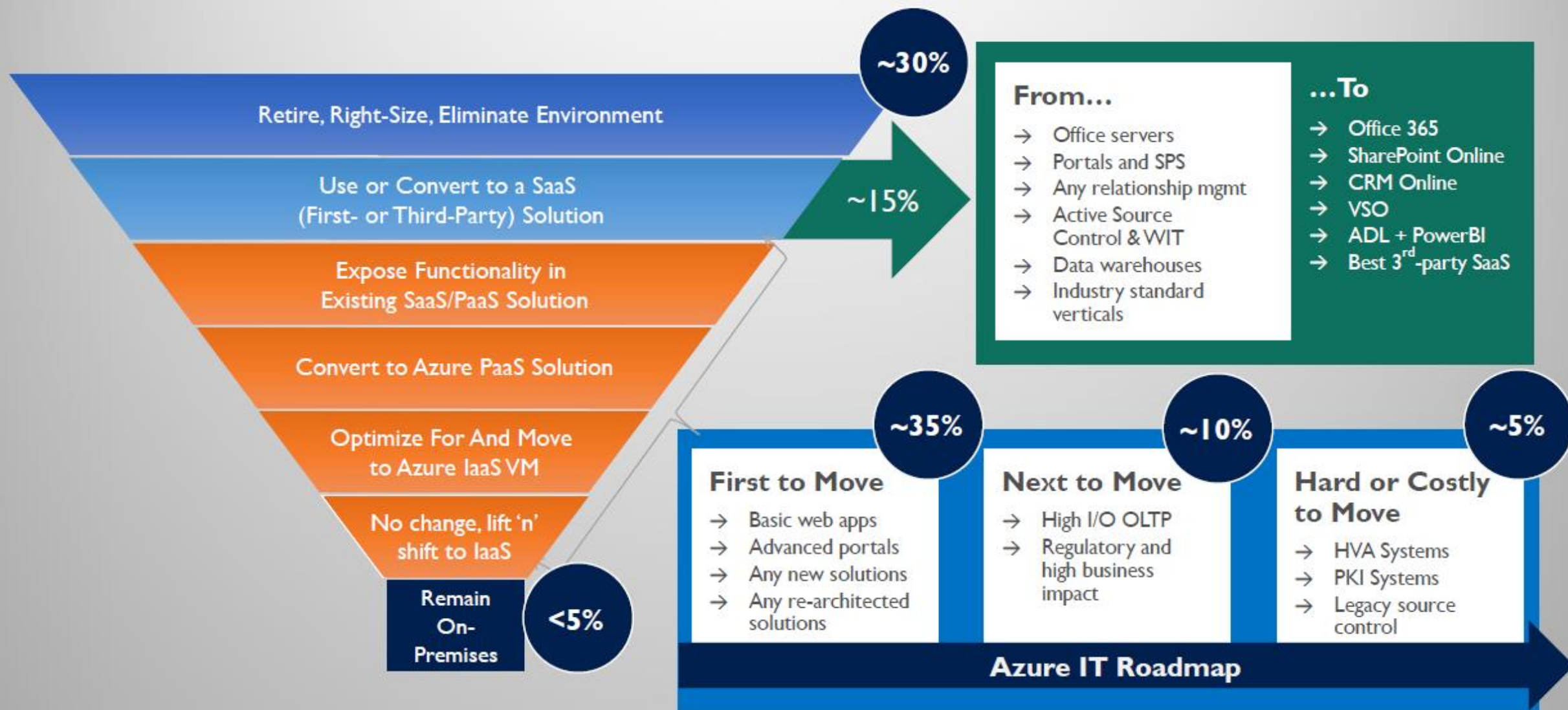
Improving monitoring and deployment (performance, efficiency) to achieve more automation, transparency, feedback, governance and compliance with SLAs



# Softline Migration Methodology – Gartner 5R's



# Cloud Adoption Roadmap





# Cloud Migration Approach

## PLANNING

# 01

### STEP

- Cloud Assessment Analysis
- End State Technical Solution Design
- Project Plan Development
- Project Kick-off
- People, Process & Tools Alignment

## PRE-REQUISITS

# 02

### STEP

- Project Team Onboarding
- Subscription & Access Provisioning
- Subscription Hardening & Policy Enforcement
- Foundational Service Deployment
- Automation Development and ASR Configuration

## MIGRATION

# 03

### STEP

- Remediate Migration Issues & Risks
- Test Workload Migration Dry Run
- Application Performance & Functionality Testing
- Cut-over Scheduling & Rollback Planning

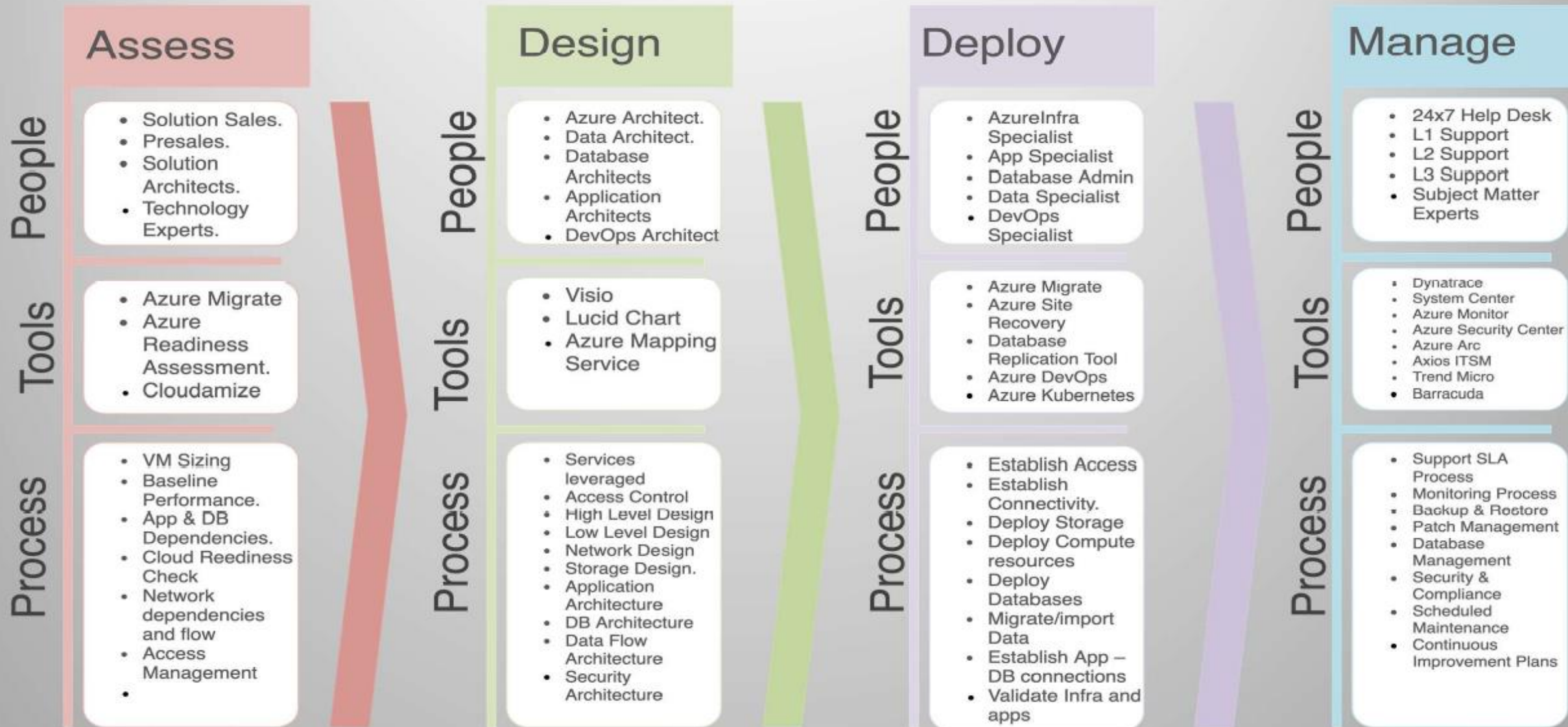
## OPERATION GO LIVE..!

# 04

### STEP

- Migration Cut-over and Decommissioning
- Hypercare Services
- Managed Services Onboarding
- Operations Handover

# Cloud Adoption Factory



Thank you!

[Andrey.Andreev@softline.com](mailto:Andrey.Andreev@softline.com)

@ZYQAndrey